

Appendix 10


Mandatory Disclosure

Mandatory Disclosure updated as on 20/02/2019.

10.1.

AICTE File No	06/06/KER/ENGG/2002/34
Date & Period of last approval	04/04/2018 (2018-19)

10.2.

Name of the Institution	BASELIOS MATHEWS II COLLEGE OF ENGINEERING
Address of the Institution	LAKE VIEW, MUTHUPILAKADU, PORUVAZHY (P.O), SASTHAMCOTTA, KOLLAM DIST,KERALA,INDIA, PIN:690520 
City & Pin Code	KOLLAM, PIN:690520
State / UT	Kerala State
Longitude & Latitude	Longitude-76.3744,Latitude-9.225
Phone number with STD code	0476 2835579
FAX number with STD code	0476 2835579
Office hours at the Institution	9.00A.M -5.00 P.M
Academic hours at the Institution	9.00A.M -4.30 P.M
Email	info@bmce.ac.in , bm2coe@gmail.com
Website	www.bmce.ac.in
Nearest Railway Station(dist in km)	Sasthamcotta (8 kms), Kollam Junction (29 kms)
Nearest Airport (dist in km)	Trivandrum International Airport(90 kms)

10.3.

Type of Institution	Private-Self Financing
Category (1) of the Institution	Minority-Religious Type
Category (2) of the Institution	Co-Education

10.4.

Name of the organization running the Institution	DR. C.T EAPEN TRUST
Type of the organization	Trust
Address of the organization	LAKE VIEW, MUTHUPILAKAD SASTHAMCOTTA KOLLAM - 690520
Registered with	SUB REGISTRAR, ADOOR, PATHANAMTHITTA DIST., KERALA,
Registration Date	01.01.1970
Website of the organization	www.ctetrust.org

10.5.

Name of the affiliating University	University of Kerala, APJ Abdul Kalam Technological University
Address	Thiruvananthapuram, Kerala, India
Website	http://www.keralauniversity.ac.in , www.ktu.edu.in
Latest affiliation period	2018-19

10.6.

Name of Principal/Director	Dr.L. PADMA SURESH
Exact Designation	Principal
Phone number with STD code	0476-2835579
FAX number with STD code	0476-2835579

Email	principalofbmce@gmail.com
Highest Degree	Ph.D (EE), Ph.D(CS)
Field of Specialization	Electrical and Electronics Engineering

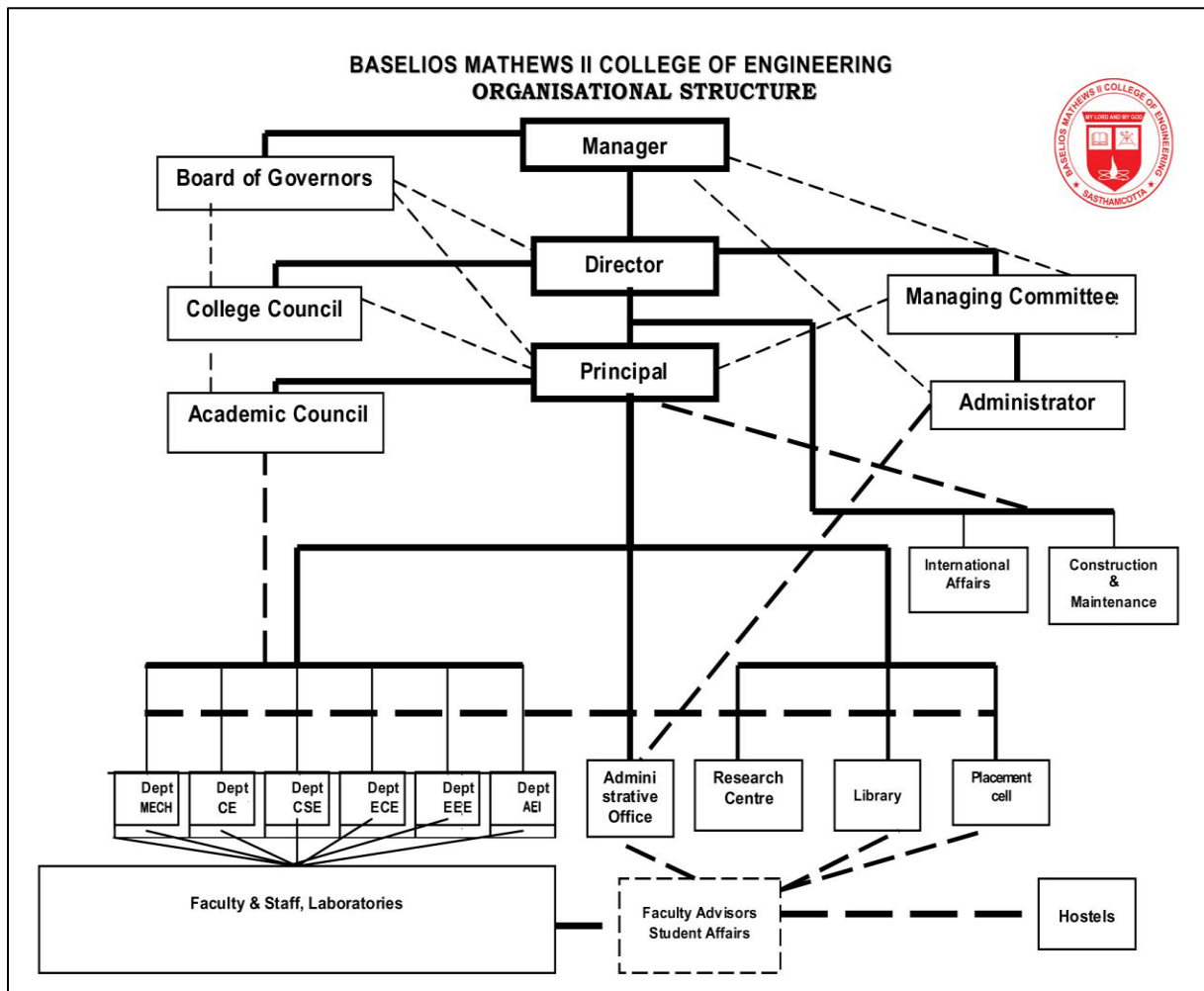
10.7

Governing Board Members	<p>Board of Trustees</p> <ol style="list-style-type: none"> 1. H.H. Baselios Marthoma Paulose II - Chairman 2. H.G. Zachariah Mar Anthonios Metropolitan - Manager 3. H.G.Yacoob Mar Elias Metropolitan - Trustee 4. H.G Zachrias Mar Aprem Metropolitan - Trustee 5. Rev. Fr. K.C. Samuel - Trustee 6. Rev. Fr. Dr. George Cheriyan - Trustee 7. Justice J B Koshy - Trustee 8. Rev. Fr. Thomas Varghese Chavadyil - Secretary <p><u>Executive Committee of the College (Managing Committee)</u></p> <ol style="list-style-type: none"> 1. H.H. Baselios Marthoma Paulose II - Chairman 2. H.G. Zachariah Mar Anthonios Metropolitan - Member 3. H.G.Yacoob Mar Elias Metropolitan - Member 4. H.G Zachrias Mar Aprem Metropolitan - Member 5. Rev. Fr. Thomas Zachariah - Member 6. Rev. Fr.Thomas Varghese Chavadyil (Secretary, Dr.C.T Eapen Trust) - Member 7. Rev. Fr. Dr. George Cheriyan, Superior Mount Horeb Ashramam - Member 8. Mr. A. K. Thomas (Former Member, Kerala PSC) - Member 9. Mr. P. P. Thomas (Rtd. Chief Engineer, Kerala PWD) - Member 10. Dr. T.A George (Rtd Principal, Catholicate College, Pathanamthitta) - Member 11. Prof. D.K. John (Former Syndicate Member, Kerala University) - Member 12. Mr. K.T George (Industrialist and Businessman) - Member 13. Mr.Johnson Oommen(Industrialist and Businessman) - Member 14. Dr. F. V. Albin (Director, BMCE) - Member 15. Dr. L. Padma Suresh (Principal, BMCE) - Member Secretary
	<p>Frequency of meetings & date of last meeting</p> <p>16/10/2018</p>

10.8

<p>Academic Advisory Body</p>	<ol style="list-style-type: none"> 1. Dr. F. V. Albin (Director) 2. Dr. L. Padma Suresh (Principal) 3. Rev. Fr. Thomas Varghese Chavadyil (Administrator) 4. Dean Academic 5. Chief Coordinator, Advisory System 6. Heads of Departments
<p>Frequency of meetings & date of last meeting</p>	<p>Meetings are held regularly to discuss various policy and academic matters relating to the institution</p>

10.9. Organizational Chart



10.10

Student feedback mechanism on institutional Governance /faculty performance	Yes, available
---	----------------

10.11

Grievance redressal mechanism for faculty, staff and students	Yes, Available
---	----------------

10.12.

	UG-B.Tech	st Year of approval by the Council	Year wise sanctioned intake	Year wise Actual admissions	Cut off marks- General quota
2018-2019	AEI	2002	30	6	Candidates who have passed Higher Secondary Examination, Kerala or examinations recognized as equivalent thereto with 50% marks in Mathematics separately and 50% marks in Mathematics, Physics and Chemistry put together are eligible for admission under Government quota. However, candidates who have passed higher secondary examination, Kerala or Examinations recognized as equivalent there to with 45% marks in Mathematics, Physics and Chemistry put together are eligible for admission under management quota in private self financing Engineering Colleges.
	CSE	2002	60	31	
	ECE	2002	30	11	
	EEE	2006	60	18	
	CE	2008	60	34	
	ME	2010	60	39	
	PG-M.Tech				Candidates having passed Bachelors degree in Engineering/Technology (BE/B.Tech) in the relevant discipline with at least 60% Marks.
	CS	2013	18	2	

	UG-B.Tech	st Year of approval by the Council	Year wise sanctioned intake	Year wise Actual admissions	Cut off marks- General quota
	AEI	2002	60	9	Candidates who have passed Higher Secondary Examination, Kerala or examinations recognized as equivalent thereto with 50% marks in Mathematics separately and 50% marks in Mathematics, Physics and
	CSE	2002	60	29	

2017-2018	ECE	2002	60	12	Chemistry put together are eligible for admission under Government quota. However, candidates who have passed higher secondary examination, Kerala or Examinations recognized as equivalent there to with 45% marks in Mathematics, Physics and Chemistry put together are eligible for admission under management quota in private self financing Engineering Colleges.
	EEE	2006	60	19	
	CE	2008	60	51	
	ME	2010	60	45	
	PG-M.Tech				Candidates having passed Bachelors degree in Engineering/Technology (BE/B.Tech) in the relevant discipline with at least 60% Marks.
	CS	2013	18	13	

	UG-B.Tech	st Year of approval by the Council	Year wise sanctioned intake	Year wise Actual admissions	Cut off marks- General quota
2016-2017	AEI	2002	60	21	Candidates who have passed Higher Secondary Examination, Kerala or examinations recognized as equivalent thereto with 50% marks in Mathematics separately and 50% marks in Mathematics, Physics and Chemistry put together are eligible for admission under Government quota. However, candidates who have passed higher secondary examination, Kerala or Examinations recognized as equivalent there to with 45% marks in Mathematics, Physics and Chemistry put together are eligible for admission under management quota in private self financing Engineering Colleges.
	CSE	2002	60	39	
	ECE	2002	60	17	
	EEE	2006	60	34	
	CE	2008	60	62	
	ME	2010	60	62	
	PG-M.Tech				Candidates having passed Bachelors degree in Engineering/Technology (BE/B.Tech) in the relevant discipline with at least 60% Marks.
	CS	2013	18	4	

	UG-B.Tech	st Year of approval by the Council	Year wise sanctioned intake	Year wise Actual admissions	Cut off marks- General quota
	AEI	2002	60	27	Candidates who have passed Higher Secondary Examination, Kerala or examinations recognized as

2015-2016	CSE	2002	60	37	equivalent thereto with 50% marks in Mathematics separately and 50% marks in Mathematics, Physics and Chemistry put together are eligible for admission under Government quota. However, candidates who have passed higher secondary examination, Kerala or Examinations recognized as equivalent there to with 45% marks in Mathematics, Physics and Chemistry put together are eligible for admission under management quota in private self financing Engineering Colleges.
	ECE	2002	60	29	
	EEE	2006	60	40	
	CE	2008	60	59	
	ME	2010	60	63	
	PG-M.Tech				Candidates having passed Bachelors degree in Engineering/Technology (BE/B.Tech) in the relevant discipline with at least 60% Marks.
	CS	2013	18	7	

		st 1 Year of approval by the Council	Year wise sanctioned intake	Year wise Actual admissions	Cut off marks- General quota
	UG-B.Tech				
2014-2015	AEI	2002	60	24	50% marks for Mathematics separately and 50% marks for Physics, Chemistry and Mathematics taken together at the +2 or equivalent exams approved by the University
	CSE	2002	60	30	
	ECE	2002	60	15	
	EEE	2006	60	27	
	CE	2008	60	61	
	ME	2010	60	59	
	PG M.Tech				
CS	2013	18	8		

UG-B.Tech					
		1 st Year of approval by the Council	Year wise sanctioned intake	Year wise Actual admissions	Cut off marks- General quota
2013-2014	AEI	2002	60	27	50% marks for Mathematics separately and 50% marks for Physics, Chemistry and Mathematics taken together at the +2 or equivalent exams approved by the University
	CSE	2002	60	33	
	ECE	2002	60	37	
	EEE	2006	60	30	
	CE	2008	60	60	
	ME	2010	60	66	
	PG M.Tech				Candidates having passed Bachelors degree in Engineering/Technology (BE/B.Tech) in the relevant discipline with at least 60% Marks.
	CS	2013	18	18	

B.Tech		% Students passed with Distinction	% Students passed with First Class	Students Placed	Average Pay package, Rs./Year	Students opted for Higher Studies
2018-2019	AEI	0	31.8	9		
	CSE	0	33.33	5		
	ECE	0	46.15	3		
	EEE	20	28	10		
	CE	15.2	32.20	4		
	ME	1.6	27.86	5		

B.Tech		% Students passed with Distinction	% Students passed with First Class	Students Placed	Average Pay package, Rs./Year	Students opted for Higher Studies
2017-2018	AEI	3.7	22.22	9		
	CSE	0	33.3	5		
	ECE	0	34.21	3		
	EEE	10	23.33	10		
	CE	8.33	41.66	4		
	ME	1.5	39.29	5		

B.Tech		% Students passed with Distinction	% Students passed with First Class	Students Placed	Average Pay package, Rs./Year	Students opted for Higher Studies
2016-17	AEI	0	20.8	2		
	CSE	0	17.9	11		
	ECE	0	40.6	2		
	EEE	0	23.8	1		
	CE	7	40.35	4		
	ME	7.1	25	3		

B.Tech		% Students passed with Distinction	% Students passed with First Class	Students Placed	Average Pay package, Rs./Year	Students opted for Higher Studies
2014 - 2015	AEI	0	32	3		
	CSE	0	32.5	4		
	ECE	2	17.77	2		
	EEE	3	14.70	2		
	CE	5	43.85	8		
	ME	0	46.55	8		

B.Tech		% Students passed with Distinction	% Students passed with First Class	Students Placed	Average Pay package, Rs./Year	Students opted for Higher Studies
2013 - 2014	AEI	2	14	2		
	CSE	4	20	5		
	ECE	4	41	7		
	EEE	7	30	3		
	CE	7	34	-		
	ME	0	24	-		

B.Tech		% Students passed with Distinction	% Students passed with First Class	Students Placed	Average Pay package, Rs./Year	Students opted for Higher Studies
2012 - 2013	AEI	-	5	1		
	CSE	5	46	8		
	ECE	2	33	6		
	EEE	2	50	9		
	CE	2	26	-		

	ECE	AEI	CSE	EEE	CE	MECH
Professional Society Memberships	IEEE Membership taken by some students	IEEE Membership taken by some students	ISTE Student Chapter	ISTE Student chapters	Nil	The department of Mechanical Engg. In the college joined the elite rank of ASME sections in 2012

Professional activities	BMC Technologies, an in-house product development company which acts as an innovation and Entrepreneurship development centre was established. Faculty development program in Arduino at mega controllers	BMC Technologies, an in-house product development company which acts as an innovation and Entrepreneurship development centre was established. Faculty development program in Arduino at mega controllers	Three Workshops, 1 invited lecture and 8 faculty development programme classes were conducted.	One Invited lecture. Faculty development program attended	2 invited lectures conducted. Faculty attended Tequip classes.	A team from the college took part in HPVC India held at IIT Delhi and won first position in Safety and eighth position in overall. A team from the college took part in SPDC-'14 held at Bits, Pilani Rajasthan and won 4 th position in water rocketry. (student Design Challenge) among 45 Colleges.
Consultancy activities	Nil	Nil	Offers consultancy for educational software products, accreditation automation and network design and administration	Started energy audit cell in collaboration with KSEB	Sample testing for Indian railways conducted.	Nil
Grants fetched	Nil	Nil	Nil	Nil	Nil	Nil
Departmental Achievements	Attained better results and better ranking in University Level	Attained better results and better ranking in University Level	Conducted short term courses to faculty and students for improvement of quality.	Electrical and electronics Engg. Association is inaugurated.	Ranking changed from 17 th position to 9 th position in Kerala University	Secured sixth position among 34 Engineering colleges under university of Kerala in 4 th sem B.Tech Exam April-May 2013. Two Students of 2011-2015 Batch were selected as Zonal representatives of ASME.
Distinguished Alumni	Meeting Held	Meeting Held	Meeting Held	Meeting Held	Meeting Held	Meeting Held

10.13.(Profile of the Faculty attached)

Name of Teaching Staff *	
Designation	
Department	
Date of joining the institution	
Qualifications with class/Grade	UG PG PhD
Total Experience in Years	Teaching Industry Research
Papers Published	National International
Papers Presented in Conferences	National International
PhD Guide? Give field & University	Field University
PhDs/Projects Guided	PhDs Projects at Masters level
Books Published/IPRs/ Patents	
Professional Memberships	
Consultancy Activities	
Awards	
Grants fetched	
Interaction with Professional institutions	Established LabView Academy in the college in collaboration with National Instruments Bangalore. The college has established tie-up with companies like Microsoft, Yokogawa and Prolific

LIST OF FACULTIES

Name of the Course	SL No	Name(s) of the Teaching Faculty	Designation (Lecturer/ Asst Professor /Professor)	Qualification with field of specialization with class / division of passing			Remarks
				UG	PG	Doctorate	
ME	1	Dr. F V Albin	Professor (Director)	B.Sc. Engg	M.Tech	Ph.D	
Civil	2	Dr. L. Padma Suresh	Professor (Principal)	B.E	M E	Ph.D	
Civil	3	Prof. Oommen Samuel	Dean Academic	B.Sc. Engg	MSc (Strut. Engg.)		
Civil	4	Manjusha .M	Asst. Professor	B E	M.Tech		
Civil	5	Vishnu Vijayan	Asst. Professor	B.E	M.E		
Civil	6	Anju Varghese	Asst. Professor	B.Tech	M.Tech		
Civil	7	Sruthi D Sivan	Asst. Professor	B.Tech	M.Tech		
Civil	8	Vidu V S	Asst. Professor	B.Tech	M.Tech		
Civil	9	Reeba Jacob	Asst. Professor	B.Tech	M.Tech		
Civil	10	Felma Fernandez	Asst. Professor	B.Tech	M.Tech		
Civil	11	Aswathy Das	Asst. Professor	B.Tech	M.Tech		
Civil	12	Asha Raj	Asst. Professor	B.Tech	M.Tech		
Civil	13	Haleema M	Asst.	B.Tech	M.Tech		

			Professor				
ME	14	Shamim I	Asst. Prof. and HOD	B .E	M.Tech		
ME	15	Aju John	Asst. Professor	B.Tech	M.Tech		
ME	16	Abraham Sam Thomas	Asst. Professor	B.E	M.E		
ME	17	Sarath Krishnan A	Asst. Professor	B.Tech	M.Tech		
ME	18	Sruthi Jose	Asst. Professor	B.Tech	M.Tech		
ME	19	Vishnu A R	Asst. Professor	B.Tech	M.Tech		
ME	20	Jobin Thomas	Asst. Professor	B.Tech	M.Tech		
ME	21	Nikhil Mohan	Asst. Professor	B.Tech	M.E		
EE	22	Prof. Mathew Varghese Vaidyan	Professor	B.Sc Engg	M.Sc Engg	Ph.D	
EE	23	Lekshmi Balan	Asst. Professor	B.Tech	M.Tech		
EE	24	Chinnu.U.S	Asst. Professor	B.Tech	ME		
EE	25	Karthika M S	Asst. Professor	B.Tech	M.Tech		
EE	26	Jibi P Mathew	Asst. Professor	B.Tech	M.Tech		
EE	27	Priya A Geevarghese	Asst. Professor	B.Tech	M.Tech		
EE	28	Sujatha S.	Asst. Professor	B.E	M.Tech		
EE	29	Jiffy Anna John	Asst. Professor	B.Tech	M.Tech		

EE	30	Aswani Rajan	Asst. Professor	B.Tech	M.Tech		
EE	31	Sonia Dathan	Asst. Professor	B.Tech	M.Tech		
EC	32	Manoj Kumar P V	Professor HOD	B.Tech	M.Tech		
EC	33	Manju T. Kurian	Asst. Professor	B.E	M.Tech		
EC	34	Nidhin T G	Asst. Professor	B E	M.Tech		
EC	35	Princy Sera Rajan	Asst. Professor	B.Tech	M.E		
EC	36	Mathew P.C	Asst. Professor	B.E	M.E		
EC	37	Darsana S Babu	Asst. Professor	B.Tech	M.Tech		
EC	38	Steffi Rose Punnoose	Asst. Professor	B.Tech	M.Tech		
EC	39	Vishu V	Asst. Professor	B.Tech	M.Tech		
EC	40	Neeraja R	Asst. Professor	B.Tech	M. Tech		
EC	41	Annie Koshy	Asst. Professor	B.E	M.Tech		
EC	42	Fathima Abdul Azeez	Asst. Professor	B.Tech	M.E		
EC	43	Fr. Aby Raju	Asst. Professor	B.Tech	M.E		
EC	I-01	V Vidhyadharan	Lab Instructor	Diploma	-		
EC	I-02	Soniya Johns	Lab Instructor	Diploma	-		
EC	I-03	Geetha.G.S	Lab Instructor	Diploma	-		

AE	44	Fernandes Priya Napolian	Asst. Professor & HOD	B.E	M.Tech		
AE	45	Sarika G	Asst. Professor	B.E	M.Tech		
AE	46	Ludia B	Asst. Professor	B.Tech	M.Tech		
AE	47	Sameena M H	Asst. Professor	B.E	M.Tech		
AE	48	Sruthi Sivadasan	Asst. Professor	B.Tech	M.Tech		
AE	49	Asha Mariam Jacob	Asst. Professor	B.E	M.E		
AE	50	Rency Rajan	Asst. Professor	B.Tech	M.Tech		
AE	51	Anu Varghese	Asst. Professor	B.E	M.E		
AE	52	Karthik M	Asst. Professor	B.Tech	M.E		
AE	53	Shijinsha S N	Asst. Professor	B.Tech	M.Tech		
CS	54	Radhakrishnan. B	Asst.Professor & HOD	B.Tech	M.Tech	Ph.D	
CS	55	Jayakrishnan R	Asst. Professor	B E	M.Tech		
CS	56	Shine Raj .G	Asst. Professor	B.E	M.Tech	Ph.D	
CS	57	Raji P G	Asst. Professor	B.Tech	M.Tech		
CS	58	Dr. S. H. Krishna Veni	Associate Professor	B.E	M.E	Ph.D	
CS	59	Manolekshmi I	Asst. Professor	B.E	M.Tech		
CS	60	Rainu Boben	Asst. Professor	B.Tech	M.Tech		
CS	61	Kavitha V K	Asst.	B.Tech	M.Tech		

			Professor				
CS	62	Ann Mary Varghese	Asst. Professor	B.Tech	M.E		
CS	63	Deepa Rajan S	Asst. Professor	B.Tech	M.Tech		
CS	64	Preetha S L	Asst. Professor	B.Tech	M.Tech		
CS	65	Stephie Sara Philipose	Asst. Professor	B.Tech	M.Tech		
CS	66	Sam G Benjamin	Asst. Professor	B.Tech	M.Tech		
		HUMANITIES AND SCIENCE					
H&S/ Maths	67	Reena George	Asst. Professor	B.Sc. B.Ed	M.Sc		
H&S/ Maths	68	Manju Koshy	Asst. Professor	B.Sc. B.Ed	M.Sc		
H&S/ Maths	69	Sandhya. I	Asst. Professor	B.Sc, B.Ed	M.sc		
H&S/ Maths	70	Sajitha V Nair	Asst. Professor	B.Sc	M.Sc M.Ed		
H&S/ Physics	71	Sangeetha Chandran C S	Asst. Professor	B.Sc. B.Ed	M.Sc M.Phil		
H&S/ Chemistry	72	Siny George	Asst. Professor	B.Sc	M.Sc B.Ed		
H&S/ Economics	73	Kesyamma Philipose	Asst. Professor	BA	MA		
Guidance & Counseling Centre	74	Rev. Fr. Dr. Koshy Vaidyan. K. M	Counselor & Head	B.A, B.D	M.Th, Ph. D		
H & S English	75	Neethu Lekshmi. R. G	Asst. Professor	B.A, B.Ed	M.A		
H&S	76	Nabin N V	Asst.	B.P.E	M.P.E		

Phy Edu			Professor				
H & S Accountancy	77	Muhammed Shafi. B	Asst. Professor (Guest Faculty)	B.Com	M.Com		

*Will be re-designated to higher post on receipt of necessary higher degree certificate

14/02/2019

PRINCIPAL

10.14 Admission quota#													
Entrance test/admission criteria	Admission is based on the rank list published by CEE,Kerala												
Cut off /last candidate admitted	<p>B.Tech - Candidates who have passed Higher Secondary Examination, Kerala or examinations recognized as equivalent thereto with 50% marks in Mathematics separately and 50% marks in Mathematics, Physics and Chemistry put together are eligible for admission under Government quota. However, candidates who have passed higher secondary examination, Kerala or Examinations recognized as equivalent there to with 45% marks in Mathematics, Physics and Chemistry put together are eligible for admission under management quota in private self financing Engineering Colleges.</p> <p>M.Tech - Candidates having passed bachelors degree in Engineering/Technology (BE/B.Tech) in the relevant discipline with at least 60% Marks.</p>												
Fees in rupees	<table border="1"> <thead> <tr> <th>Course</th> <th>Tuition Fee(Govt/Mgt)</th> </tr> </thead> <tbody> <tr> <td>B.Tech I Year</td> <td>(Rs.20000/Rs.30000/Rs.35000/Rs.45000/ Rs.35000/Rs.55000/Rs.65000)</td> </tr> <tr> <td>B.Tech II Year</td> <td>Rs. 50000/85000</td> </tr> <tr> <td>B.Tech III Year</td> <td>Rs. 50000/85000</td> </tr> <tr> <td>B.Tech IV Year</td> <td>Rs. 75000/85000</td> </tr> <tr> <td>M.Tech Ist Semester</td> <td>RS. 25000/25000</td> </tr> </tbody> </table>	Course	Tuition Fee(Govt/Mgt)	B.Tech I Year	(Rs.20000/Rs.30000/Rs.35000/Rs.45000/ Rs.35000/Rs.55000/Rs.65000)	B.Tech II Year	Rs. 50000/85000	B.Tech III Year	Rs. 50000/85000	B.Tech IV Year	Rs. 75000/85000	M.Tech Ist Semester	RS. 25000/25000
Course	Tuition Fee(Govt/Mgt)												
B.Tech I Year	(Rs.20000/Rs.30000/Rs.35000/Rs.45000/ Rs.35000/Rs.55000/Rs.65000)												
B.Tech II Year	Rs. 50000/85000												
B.Tech III Year	Rs. 50000/85000												
B.Tech IV Year	Rs. 75000/85000												
M.Tech Ist Semester	RS. 25000/25000												
Number of Fee Waivers offered	15 Students were admitted under AICTE Fee Waiver Scheme. SC/ST/OEC students are exempted from payment of fees at the time of admission. Their scholarship will be sanctioned by the welfare Department of the Government.												
Admission Calendar	<p><u>B.Tech</u></p> <p>Last date for request for applications. - 09/01/2018. Last date for submission of application. - 04/02/2018. Last date to notify defects, if any - 30/06/2018. Publication of merit list - 09/07/2018. Selection and admission begins - 13/07/2018.</p> <p><u>M.Tech</u></p> <p>Last date for request for applications. - 17/06/2018. Last date for submission of application. - 30/06/2018. Last date to notify defects, if any - 10/07/2018. Publication of merit list - 15/07/2018. Selection and admission begins - 20/07/2018.</p>												
PIO quota	No quota												

10. 15. Infrastructural information

Classroom/Tutorial Room facilities	30 class rooms 18 Tutorial rooms
------------------------------------	-------------------------------------

List of Major Equipment/Facilities

Sl.NO	NAME OF THE LAB	Room No./Area/Users	LIST OF MAJOR EQUIPMENT/FACILITIES
FIRST YEAR LABS			
1	ENGINEERING WORKSHOPS	AREA: 750 SQ.M ROOM NO: BLOCK – C S1 & S2 ECE, AEI, CSE, EEE, CE, ME	Fitting Shop Carpentry Shop Smithy Shop Welding Shop Painting and Sheet metal Shop Foundry Shop Plumbing Shop Stores.
ODD SEMESTER LABS			
2	COMPUTER AIDED DRAFTING AND MODELLING LAB	Area : 251.80 Sq M Room No: S3 ME	30 Systems Solid Works 2010 (30 Users)
3	PRODUCTION ENGINEERING LAB	Area : 375 Sq M Room No:1 Block C S5 ME	NAGMATI LATHE -16 Nos SHAPER -5 Nos SLOTTER -4 Nos HACKSAW M/C - 1 No PLANNER - 1 No TOOL GRINDER -1 No DRILLING M/C - 1 No
4		AREA: 251.80 SQ.M ROOM NO:107A& 107B S3 CSE	Computer Terminals : 80 Nos.

			Server Computer : 1 No. Printer : 5 Nos. DVD Writer : 1 No. Scanner : 1 No.
5	MINI PROJECT / OOP LAB	AREA: 251.80 SQ.M ROOM NO: 107A & 107B S5 CSE	Computer Terminals : 80 Nos. Server Computer : 1 No. Printer : 5 Nos. DVD Writer : 1 No. Scanner : 1 No.
6	APPLICATION SOFTWARE DEVELOPMENT LAB	AREA: 251.80 SQ.M ROOM NO: 107A & 107B S5 CSE	Computer Terminals : 80 Nos. Server Computer : 1 No. Printer : 5 Nos. DVD Writer : 1 No. Scanner : 1 No.
7	COMMUNICATION LAB	ALGORITHM DESIGN & GRAPHICS LAB ROOM NO: 107A & 107B S8 CSE	Computer Terminals : 80 Nos. Server Computer : 1 No. Printer : 5 Nos. DVD Writer : 1 No. Scanner : 1 No.
8	ELECTRONIC CIRCUITS LAB	AREA: 134.80 SQ.M ROOM NO: 201, S5 EEE	Oscilloscope 20 MHz : 10, Dual trace Function Generator : 5 No 1 Mhz Function Generator : 5 0 - 30 V 2 Amps : 10 Nos.

			Power Meter (AF) : 1 Nos.
9	ELECTRONIC DEVICES LAB	AREA: 73.5 SQ.M ROOM NO: 216A S3 ECE, AEI, CSE	Oscilloscope 20 MHz : 10, Dual trace Function Generator : 5 No 1 Mhz Function Generator : 5 0 - 30 V 2 Amps : 10 Nos. Power Meter (AF) : 1 Nos.
10	DIGITAL ELECTRONICS LAB	AREA: 74.2 SQ.M ROOM NO: 116 S3 ECE	Digital Trainer Kit : 20 Nos. Digital IC Tester : 1 No Oscilloscope 20 MHz : 2 Nos.
11	COMMUNICATION ENGINEERING LAB	AREA: 76.32 SQ. M ROOM NO: 216 B S5 ECE	Oscilloscope 30 MHz : 10 Nos. Dual Trace DC Regulated Power Supply : 10 Nos. +/- 15 V 1 Amps Function Generator : 10 Nos.
12	INDUSTRIAL ELECTRONICS LAB	AREA: 111.30 SQ.M ROOM NO: 217 A S7 ECE	Oscilloscope 30 MHz : 10Nos. DC Regulated Power Supply : 10 Nos. +/- 15 V 1 Amps Function Generator : 10 Nos.
13	POWER ELECTRONICS LAB	AREA: 111.30 SQ.M ROOM NO: 217 A S5 AEI	Oscilloscope 30 MHz : 10Nos. DC Regulated Power Supply : 10 Nos. +/- 15 V 1 Amps

			Function Generator : 10 Nos.
14	ELECTRONIC CIRCUITS AND SIMULATION LAB	AREA: 111.30 SQ.M ROOM NO: 217 A S3 AEI	Oscilloscope 30 MHz : 10Nos. DC Regulated Power Supply : 10 Nos. +/- 15 V 1 Amps Function Generator : 10 Nos.
15	COMMUNICATION SYSTEMS LAB	AREA: 76.32 SQ. M ROOM NO: 216 B S7 ECE	Oscilloscope 30 MHz : 10 Nos. Dual Trace DC Regulated Power Supply : 10 Nos. +/- 15 V 1 Amps Function Generator : 10 Nos.
16	MEASUREMENTS & INSTRUMENTATION LAB	AREA: 76.10 SQ.M ROOM NO: 216 S5 EEE	Pressure measurement trainer : 1 No. Thermo couple Module : 2 Nos. Strain measurement trainer : 2 Nos. Displacement trainer using LVDT : 2 Nos. Area Transducer : 1 No. Diode Thermometer : 1 No. PLC Trainer kit : 1

			<p>No.</p> <p>E to P Converter : 2 Nos.</p> <p>Photo Cell Trainer : 1 No.</p> <p>RTD Module : 1 No.</p> <p>Level measurement trainer : 1 No.</p>
17	ELECTRICAL & ELECTRONICS WORKSHOP	AREA: 200 SQ.M ROOM NO: B7 S3 EEE	<p>Oscilloscope Dual trace : 3 Nos.</p> <p>Power Supply : 6 Nos.</p> <p>Function Generator - 1 MHz : 2 Nos.</p> <p>P C B Drilling Machine : 1 Nos.</p> <p>Wiring Boards</p> <p>Drilling Machine</p> <p>Asserted tools such as</p> <p>Hammers</p> <p>Chisels</p> <p>Pockers</p> <p>Sledge Hammer</p> <p>Wooden Hammer</p> <p>Hacksaw</p> <p>Woodcutter</p> <p>Supply Boards</p> <p>MCB(Miniature Circuit Breaker)</p>

18	CONTROL SYSTEM LAB	AREA: 143.40 SQ.M ROOM NO: 207 B S7 AEI	Software(Lab VIEW) Professional System : 50 User. Computer Terminels :30 Nos NI ELVIS II Basic bundle with Integrated Instruments : 1 Nos Inverted Pendulum add on board for ELVIS : 1 Nos NI USB- 6009 DAQ Card : 1 Nos Microprocessor based DC motor controller : 1 Nos Analog PID controller : 1 Nos
19	DIGITAL SIGNAL PROCESSING LAB	AREA: 123.56 SQ. M ROOM NO: 106 S5ECE	Computer Systems with SPICE and MATLAB : 35 Nos. DSP Trainer Kit
20	BIOMEDICAL & SIGNAL PROCESSING LAB	AREA: 123.56 SQ. M ROOM NO: 106 S7 AEI	ECG EEG Respiration Rate measurement. PH Measurement DSP Trainer Kit
21	FLUID MECHANICS LAB	AREA: 200 SQ.M ROOM NO: BLOCK B S3 EEE, S4 ME, S4 CE	Kaplan Turbine Variable Speed Centrifugal Pump Meta centric Height Apparatus Francis Turbine Test Rig Pelton Wheel Test Rig

			<p>Single Stage/Constant Speed Centrifugal Pump Test Rig</p> <p>Multi Stage/ Multi Speed Centrifugal Pump Test Rig</p> <p>Reciprocating Pump Test Rig</p> <p>Venturimeter Apparatus</p> <p>Orifice meter Apparatus</p> <p>Notch Apparatus</p> <p>Frictional pipe Apparatus</p>
22	ELECTRICAL MACHINES II LAB	<p>AREA: 375 SQ.M</p> <p>ROOM NO: BLOCK B S7 EEE</p>	<p>DC Generator For conducting OCC</p> <p>DC Shunt and Compound Generator</p> <p>DC Series Motor</p> <p>Coupled Machines for conducting Hopkinton's Test</p> <p>Single Phase and Three Phase Transformers.</p> <p>Alternator Coupled with DC Motor</p> <p>Synchronizing Panel</p> <p>Loading Inductor – Single Phase</p> <p>Loading Inductor – Three Phase</p> <p>Three Phase Loading Capacitor</p> <p>Single Phase Loading Capacitor</p> <p>Three Phase Loading Rheostat</p> <p>Single Phase Loading Rheostat</p> <p>Slip Ring Induction Motor with loading arrangement</p> <p>Squirrel Cage Induction Motor</p>

			<p>Star / Delta Starters</p> <p>Two Speed Induction Motor</p> <p>Induction Generators</p> <p>Single Phase Induction Motor</p>
23	INTERNAL COMBUSTION ENGINES LAB	<p>Area : 200 Sq M</p> <p>Room No:2 Block B</p> <p>S4 ME</p>	<p>Single Cylinder Petrol/ Diesel Engine</p> <p>Multi Cylinder Petrol/ Diesel Engine</p> <p>Single Cylinder four stroke Petrol engine</p> <p>Single cylinder four stroke Diesel engine</p> <p>Multi cylinder Petrol engine</p> <p>Multi cylinder four stroke Diesel engine</p> <p>Cut section of single cylinder Petrol/Diesel engine</p> <p>Air Compressor</p> <p>Air Blower</p> <p>Retardation Test Rig</p> <p>Heat Balance Test Rig</p> <p>Junker's Gas Calorimeter</p> <p>Bomb Calorimeter</p> <p>Flash and Fire Point Apparatus</p> <p>Redwood Viscometer</p>
24	POWER SYSTEM LAB	<p>AREA: 155 SQ.M</p> <p>ROOM NO: BLOCK E</p> <p>S7 EEE</p>	<p>100KV High Voltage Test Kit</p> <p>High Voltage String Insulators</p> <p>High Voltage Lightning Arrestors</p> <p>150 mm Motorized Sphere Gap</p> <p>150 KV 225 Joules 5 Stage Impulse Generators</p> <p>30 KV Test Kit/Dielectric Strength</p>

			<p>Tan Delta Meter and Schering Bridge</p> <p>Earth Resistance Measuring Kit</p> <p>Power Factor Improvement Studying Unit</p> <p>Three Phase energy Meters</p> <p>Current Transformers</p> <p>Potential Transformers</p> <p>Watt Meter</p> <p>Digital AC Peak Volt Meter</p> <p>Three Phase Auto Transformer</p> <p>Single Phase Auto Transformer</p> <p>Digital Storage Oscilloscope</p> <p>Equipment for measurement of transient and sub transient reactors</p> <p>Energy Meter Test Kit</p> <p>Electromagnetic Relays</p> <p>Solid State Relays</p> <p>Universal Test Kit</p> <p>Microprocessor Controlled Relays</p>
25	THERMAL LAB	<p>AREA: 10 SQ.M</p> <p>ROOM NO: ME BLOCK</p> <p>S7 ME</p>	<p>PARALLEL AND COUNTER FLOW HEAT EXCHANGERS APPARATUS</p> <p>HEAT TRANSFER BY FORCED CONVECTION APPARATUS</p> <p>HEAT TRANSFER FROM NATURAL CONVECTION APPARATUS</p> <p>EMMISSIVITY MEASURING APPARATUS</p> <p>HEAT TRANSFER THROUGH COMPOSITE WALL APPARATUS</p> <p>REFRIGERATION TEST RIG</p>

			<p>AIR CONDITIONING TEST RIG</p> <p>CALIBRATION OF THERMOCOUPLE</p> <p>CALIBRATION OF PRESSURE GAUGE</p> <p>HEAT PIPE DEMONSTRATOR</p> <p>THERMAL CONDUCTIVITY OF LIQUID APPARATUS</p> <p>STEFAN BOLTZMAN'S APPARATUS</p> <p>HEAT TRANSFER THROUGH PIN FIN APPARATUS</p>
26	METROLOGY LAB	<p>AREA: 94 SQ.M</p> <p>ROOM NO: ME BLOCK</p> <p>S7 ME</p>	<p>OUTSIDE MICROMETER</p> <p>DIAL GAUGE WITH MAGNETIC STAND</p> <p>VERNIER HEIGHT GAUGE 300 MM</p> <p>SLIP GAUGE 87 PCS GRADE I</p> <p>VERNIER CALIPER W/O FINE ADJ 150 MM</p> <p>VERNIER CALIPER W/O FINE ADJ 300 MM</p> <p>VERNIER CALIPER WITH FINE ADJ 150 MM</p> <p>VERNIER CALIPER WITH FINE ADJ 300 MM</p> <p>FEELER GAUGE</p> <p>GEAR TOOTH VERNIER CALIPER</p> <p>VERNIER & DEPTH GAUGE W/O FINE ADJ 150 MM</p> <p>VERNIER DEPTH WITH FINE ADJ: 150 MM</p> <p>VERNIER DEPTH GAUGE W/O FINE ADJ:</p>

			<p>300 MM</p> <p>VERNIER DEPTH GAUGE WITH FINE ADJ: 300 MM</p> <p>AUTOCOLLIMATOR WITH ATTACHMENT FOR FLATNESS MEASUREMENT</p> <p>TOOL MAKERS MICROSCOPE WITH ATTACHMENT</p> <p>METALLURGICAL MICROSCOPE</p> <p>SINGLE DISC POLISHING MACHINE</p> <p>MOUNTING PRESS</p> <p>CUTTING MACHINE</p> <p>LINISHER POLISHING WET AND DRY POLISHING MACHINE</p> <p>LVDT</p> <p>MILLING TOOL DYNAMOMETER</p> <p>LATHE TOOL DYNAMOMETER</p> <p>DRILL TOOL DYNAMOMETER</p> <p>CAST IRON SURFACE PLATE WITH STAND</p> <p>BORE DIAL GUAGE 18-55 MM</p> <p>BORE DIAL GUAGE 36-50 MM</p>
27	Survey Lab	<p>Area: 66 Sq m</p> <p>Room No. D 04</p> <p>Users: S3 CE/S5 CE</p>	<p>Dumpy Level-19</p> <p>PlaneTable-21</p> <p>Vernier Transit Theodolite-19</p> <p>Leveling Staff-21</p> <p>Ranging Rod (Metallic)-35</p> <p>Ranging Rod (Wood)-26</p> <p>Arrows-200</p>

			<p>Accessories Box-20</p> <p>Automatic Level-2</p> <p>Total Station-2</p> <p>Offset Rod-10</p> <p>Cross Staff-20</p> <p>Prismatic Compass-21</p> <p>Surveyor Compass-2</p> <p>Mallet-10</p> <p>Tape-7</p> <p>Chain-21</p>
28	Concrete Lab	<p>Area: 66 Sq m</p> <p>Room No. D 01</p> <p>Users: S5 CE</p>	<p>Compression Testing Machine</p> <p>Sieve set</p> <p>Lechatlier's Flask</p> <p>Consistency Test Mould</p> <p>Vicat Apparatus</p> <p>Vee Bee Consistometer</p> <p>Compaction Factor Apparatus</p> <p>Slump Cone</p> <p>Cylindrical Mould-3 nos</p> <p>Rectangular Mould-3 nos</p> <p>Cubical Mould-15 nos</p> <p>Concrete Mixer</p> <p>Vibrator</p> <p>Specific Gravity Cylinder</p> <p>Bulking Test Cylinder</p>
29	Geotechnical Engineering Lab	<p>Area: 66 Sq m</p> <p>Room No. D 02</p> <p>S7 CE</p>	<p>Sieve set</p> <p>Casagrande's apparatus</p>

			Oven Permeability Apparatus Consolidation apparatus Modified Proctor Compaction apparatus UCC apparatus Direct shear apparatus Field density apparatus
30	Environmental Engineering Lab	Area: 66 Sq m Room No. D 11 S7 CE	Burette – 20 Pipette – 20 Muffle Furnace Clariflocculator Laboratory Oven
EVEN SEMESTER LABS			
31	DATA STRUCTURE LAB	AREA: 251.80 SQ. M ROOM NO: 107A, 107B S4 CSE	Computer Terminals : 80 Nos. Server Computer : 1 No. Printer : 5 Nos. DVD Writer : 1 No. Scanner : 1 No.
32	MACHINE TOOLS LAB	Area : 375 Sq M Room No:2 Block C S6 ME	RAMAN Horizontal Milling M/C -4Nos HDCNC Universal Turrent Milling M/C -1Nos Surface Grinding M/C -1 Nos Cylindrical Grinding M/C - 1 Nos Tool & Cutter Grinder -1 Nos Radial Drilling M/C -1 Nos

			CNC Lathe M/C - 1Nos CNC Milling M/C -1 Nos
33	SYSTEM SOFTWARE LAB	AREA: 251.80 SQ. M ROOM NO: 107A, 107B S6 CSE	Computer Terminals : 80 Nos. Server Computer : 1 No. Printer : 5 Nos. DVD Writer : 1 No. Scanner : 1 No.
34	OPERATING SYSTEMS & NETWORKING LAB	AREA: 251.80 SQ. M ROOM NO: 107A, 107B S8 CSE	Computer Terminals : 80 Nos. Server Computer : 1 No. Printer : 5 Nos. DVD Writer : 1 No. Scanner : 1 No.
35	PROJECT	AREA: 251.80 SQ M ROOM NO: 107A, 107B S8 CSE	Computer Terminals : 80 Nos. Server Computer : 1 No. Printer : 5 Nos. DVD Writer : 1 No. Scanner : 1 No.
36	MICROCONTROLLER LAB	AREA: 73.67 SQ. M ROOM NO: 114 S6 ECE, AEI	Microprocessor Kit – 8051 : 17 Nos. Stepper Motor 2Kg- 3nos ASC – 2 Nos DAC-2 Nos Stepper motor controller -3 Noc DC Motor Speed Measurement – 3nos CRO-3Nos Computer System - 1

37	MICROPROCESSOR & SOFTWARE LAB	AREA: 325.47 SQ. M ROOM NO: 114, 107A, 107B S6 EEE	Computer Terminals : 80 Nos. Server Computer : 1 No. Printer : 5 Nos. DVD Writer : 1 No. Scanner : 1 No. Microprocessor Kit -8085 : 12 Nos. Microprocessor Kit- 8086 / 88 : 12 Nos.
38	ELECTRONIC CIRCUITS LAB	AREA: 73.45 SQ.M ROOM NO: 216 A S4 ECE	Oscilloscope 20 MHz : 10 Nos. Function Generator : 5 Nos. 1 MHz Function Generator : 5 Nos. 2 MHz Variable Power Supply 0 - 30 V 2 Amps : 10 Nos. Power Meter (AF) : 1 Nos.
39	LINEAR INTEGRATED CIRCUITS LAB	AREA: 111.30 SQ.M ROOM NO: 217 A S4 ECE	Oscilloscope 30 MHz Dual trace: 10 Nos. DC Regulated Power Supply : 10 Nos. Function Generator : 10 Nos.
40	POWER ELECTRONICS LAB	AREA: 134.80 SQ.M ROOM NO: 201 S6 EEE	SCR TRIAC Power Transistor Power MOSFET IGBT

41	DIGITAL SYSTEM DESIGN LAB	AREA: 74.20 SQ.M ROOM NO: 116 S4 CSE	Digital Trainer Kit : 20 Nos. Digital IC Tester : 1 No Oscilloscope 20 MHz : 2 Nos.
42	MICROPROCESSOR LAB	AREA: 73.67 SQ. M ROOM NO: 114 S6 CSE	Microprocessor Kit - 8085 : 12 Nos. Microprocessor Kit- 8086 / 88 : 12 Nos.
43	DIGITAL INTEGRATED CIRCUITS AND HDL LAB	AREA: 74.20 SQ.M ROOM NO: 116 S4 AEI	Digital Trainer Kit : 20 Nos. Digital IC Tester : 1 No Oscilloscope 20 MHz : 2 Nos.
44	MICROWAVE & OPTICAL COMMUNICATION LAB	AREA: 76.32 SQ. M ROOM NO: 216 B S8 ECE	Microwave Klystron Bench & Power Supply Microwave Gunn Oscillator Microwave Wave Guides, Antennas, VSWR meter Optical Communication Kit Microwave test bench : 1 Nos. (Klystron Oscillator) Microwave test bench : 1 Nos. (Klystron Oscillator) Microwave test Bench : 1 Nos. (Gun Oscillator) Microwave test Bench : 1 Nos. (Gun Oscillator)

47	ELECTRICAL MACHINES I LAB	AREA: 200 SQ.M ROOM NO: BLOCK B S4 EEE	DC Generator For conducting OCC DC Shunt and Compound Generator DC Series Motor Coupled Machines for conducting Hopkinton's Test Single Phase and Three Phase Transformers.
48	ELECTRICAL MACHINES II LAB	AREA: 375 SQ.M ROOM NO: BLOCK B S4 EEE, S6 AEI	DC Generator For conducting OCC DC Shunt and Compound Generator DC Series Motor Coupled Machines for conducting Hopkinton's Test Single Phase and Three Phase Transformers. Alternator Coupled with DC Motor Synchronizing Panel Loading Inductor – Single Phase Loading Inductor – Three Phase Three Phase Loading Capacitor Single Phase Loading Capacitor Three Phase Loading Rheostat Single Phase Loading Rheostat Slip Ring Induction Motor with loading arrangement Squirrel Cage Induction Motor Star / Delta Starters Two Speed Induction Motor Induction Generators

			Single Phase Induction Motor
49	PROCESS CONTROL LAB	AREA: 73.67 SQ.M ROOM NO: 1 S8 AEI	Level process station : 1 Nos. Temperature process station : 1 Nos. Pressure process station : 1 Nos. Flow process station : 1 Nos. Data Acquisition Kit. :1 Nos. Bottle Filling plant : 1Nos. Programmable Logic Controller:1Nos.
50	MAIN PROJECT	AREA: 143.42 SQ.M ROOM NO: 207 B S8 ECE, AEI	Computer Terminals : 30 Nos myDAQ : 10 Nos PCI cards :10 Nos. I/O Connector Block : 5 Nos DAQ Signal Accesory :5 Nos. DSP Bundle with speedy -33 : 2 Nos.
51	MINI PROJECT LAB	AREA: 98.67 SQ.M ROOM NO: 115 S6 ECE,AEI	Oscilloscope 30 MHz : 3 Nos. Power Supply : 6 Nos. Function Generator - 1 MHz : 2 Nos. Digital IC Tester : 1 No P C B Drilling Machine : 1 Nos.
52	Strength of Materials Lab	Area: 185.4 Sq m Room No. AN 010& 011 Users: S4 CE/S3 ME	Impact testing Machine Brinell Hardness Testing Machine Rockwell Hardness Testing Machine Torsion Testing Machine Universal Testing Machine Wood Testing Machine Spring Testing Machine

			<p>Fatigue Testing Machine</p> <p>Clark Maxwell Testing Machine</p> <p>Torsion on Wire</p>
53	CAD Lab	<p>Area: 73.7 Sq m</p> <p>Room No. AN 101</p> <p>Users: S6CE/S3 ME</p>	<p>Desktop computers – 30</p> <p>Microsoft Office 2007 software package</p> <p>STAADPro software package</p> <p>AutoCAD software package</p>
54	Transportation Engineering Lab	<p>Area: 66 Sq m</p> <p>Room No. D 03</p> <p>Users:S6 CE</p>	<p>Los Angeles abrasion testing machine</p> <p>CBR testing machine</p> <p>Impact testing machine</p> <p>Pensky Martens Apparatus</p> <p>Ductility testing machine</p> <p>Length & thickness gauge</p> <p>Modified Proctor Compaction apparatus</p> <p>Crushing strength mould</p> <p>Softening point apparatus</p> <p>Specific gravity bottle for bitumen</p> <p>Specific gravity apparatus for aggregates</p> <p>Tar Viscometer</p>
55	Technologies and Information Security Lab	<p>Area : 66 Sqm</p> <p>Room No. F202</p>	<p>Desktop Computers – 18</p> <p>Server Computer – 1</p> <p>LAN Connected</p>
56	Network & Operating System Lab	<p>Area : 66 Sqm</p> <p>Room No. F103</p> <p>S2 CSE M.Tech</p>	<p>Desktop Computers – 18</p> <p>Server Computer – 1</p> <p>LAN Connected</p>
57	Algorithm Design Lab	<p>Area : 66 Sqm</p> <p>Room No. F103</p> <p>S1 CSE M.Tech</p>	<p>Desktop Computers – 18</p> <p>Server Computer – 1</p>

			LAN Connected
58	PG Research Laboratory	Area : 66 Sqm Room No. F206 S3&S4 CSE M.Tech	Desktop Computers – 18 Server Computer – 1 LAN Connected
COMPUTER CENTRE FACILITIES		Total : - 535 Computers LAN& Internet connected : 400 32 Mbps Band Width BSNL LEASED LINE 39 Printers 32 Legal system software, 48 Legal Application software	

LIBRARY FACILITIES	Total Library Area in sq m	692.9
	E Journal Subscription	Nil
	Reading Room seating Capacity	150
	Working Hours from to	8.00 A.M. – 8.30 P.M.
	Multimedia PCs and Digital library facilities	Streaming video archive: Video lectures procured from NPTEL
	BOOKS AVIALABLE	Titles : 11101 Volumes : 27535
	JOURNALS	International : 18 National : 42
Auditorium/Seminar halls/Amphi	Yes ,Available	

Cafeteria	Yes , Available
Indoor Sports facilities	Yes , Available
Outdoor Sports facilities	Yes , Available
Gymnasium facilities	Not available
Facilities for disabled	Yes ,Available
Any other facilities	Transporting

10.16

Boys Hostel	Yes, Available
Girls Hostel	Yes, Available
Medical & other Facilities at Hostel	Yes, Available

10.17

Academic Sessions	Forenoon session and Afternoon Session
Examination system, Year/Sem	Semester system
Period of declaration of results	After finalization of results by the University for every Semester

10.18

Counseling /Mentoring	Yes, Available
Career Counseling	Yes, Available
Medical facilities	Yes, Available
Student Insurance	Yes, Group insurance Available

10.19

Students Activity Body	Yes, Available
Cultural activities	Yes, Available
Sports activities	Yes, Available
Literary activities	Yes, Available
Magazine /Newsletter	Yes, Available
Technical activities/Tech Fest	Yes, Available
Industrial Visits/Tours	Yes, Available
Alumni activities	Yes, Available

10.20.

Name of the Information Officer for RTI	Rev. Fr. Dr. Koshy Vaidyan K.M
Designation	Counselor and Head of guidance and counseling centre
Phone number with STD code	0476-2835579
FAX number with STD code	0476-2835579
Email	frvaidyan@yahoo.com